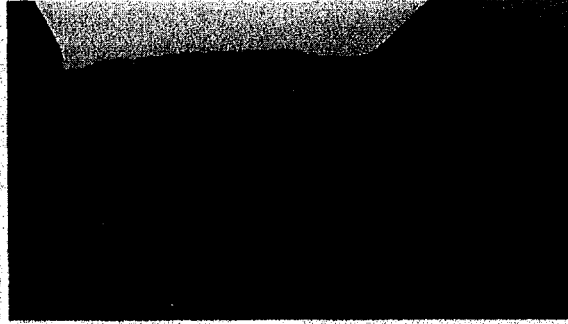
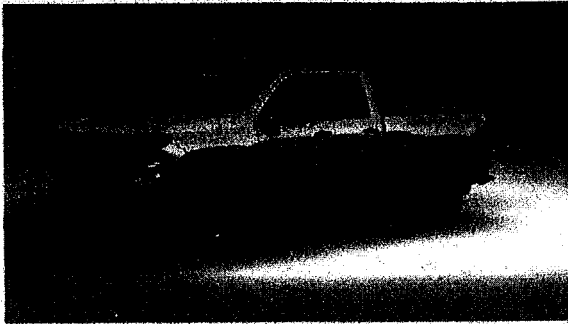


2020 SILVERADO 2500 HD 4WD Double Cab, Standard Bed WT



VEHICLE DETAILS
Standard Vehicle Price

Selected Colors

(GAZ) Summit White
\$0



(H2G) Jet Black, Vinyl seat trim
\$0



Selected Packages (1)

WT CONVENIENCE PACKAGE

Highlights Include:

(AQQ) Remote Keyless Entry

(QT5) Tailgate with EZ Lift assist, power lock & release

(AKO) Deep-tinted glass

(C49) Rear window defogger

(K34) Cruise control

Deliver To:
1200 Canal ST.
Syracuse, NY 13210

(DBG) Black outside power-adjustable vertical trailing mirrors

Selected Options (13)

(C7A) 10,000 lbs. GVWR
\$0

(F60) Heavy Duty Front Spring / Camper Package

(GT4) 3.73 rear axle ratio
\$0

(K4B) Auxiliary 730 cold-cranking amps battery

(KW5) 220-amp alternator

(L8T) 6.6L V8 Direct Injection with Variable Valve Timing Gas engine
Standard

(MYD) 6-speed, heavy-duty, electronically controlled automatic transmission
Standard

(PYN) 17" steel painted Silver wheels
Standard

(QHQ) 17" LT245/75R17E all-season, blackwall tires
\$0

(UY2) Trailing wiring provisions for camper, 5th wheel and gooseneck trailer

(ZHQ) 17" LT245/75R17E all-season, blackwall spare tire
\$0

(A52) 40/20/40 split-bench front seat
Standard

(IOR) Chevrolet Infotainment 3 System with color touchscreen
Standard

Total Vehicle and Options

Destination Freight Charge

Total Vehicle Price

Total Cash Allowance[s]

Net Price

Total Included Price Discounts and Cash Allowances:

Standard Features

Package Mechanical Interior Exterior Safety

Package

- Trailing Package
 - Trailer Hitch¹
 - Trailing hitch platform
 - Includes a 2.5" receiver hitch (with 2" insert), 4-pin and 7-pin connectors
 - 7-wire electrical harness and 7-pin sealed connector for connecting your trailer's lights and brakes to your vehicle
 - May require additional optional equipment

¹ Before you buy a vehicle or use it for trailering, carefully review the trailering section of the owner's manual. The weight of passengers, cargo and options or accessories may reduce the amount you can tow.

Mechanical

- Durabed
 - Roll-formed high-strength steel
 - 12 standard cargo tie-downs
 - CornerStep Rear Bumper
- 6.6L V8 Direct Injection with Variable Valve Timing Gas engine
 - 401 hp [299 kW] @ 5200 rpm
 - 464 lb-ft of torque [629 N-m] @ 4000 rpm
 - 3.73 rear axle ratio
 - Paired with a 6-speed automatic transmission
 - Capless fuel fill
- 6-speed, heavy-duty, electronically controlled automatic transmission
 - Overdrive gear for smooth, efficient operation
 - Auto Grade Braking that automatically downshifts when needed to enable engine braking, helping to slow the vehicle on downhill grades and reduce brake wear (operates in Tow/Haul mode)
- 3.73 rear axle ratio
 - Requires a gas engine
- 10,350 lbs. GVWR
 - When properly equipped; includes weight of vehicle, passengers, cargo and equipment
- High-capacity air filter
 - Thick construction helps to trap more dirt before it can enter the air intake
- Air filtration monitoring
 - Alerts the driver when the engine air filter needs replacement
- Electronic shift 2-speed transfer case with push button controls
 - System shift smoothly between drive settings to handle a variety of road conditions
 - 2WD High for most on-road and highway situations

- 4WD High for snowy or wet roads when added traction is needed
 - 4WD Low for deep sand, mud or snow to provide maximum torque to all 4 wheels
 - Neutral
 - ONLY used for towing vehicle (Dinghy tow & Dolly tow capability)- allows vehicle to roll freely
 - May require additional optional equipment
 - Automatic locking rear differential
 - When the differential senses a significant difference in wheel speed, it locks to turn both rear wheels in unison for added traction
 - The Eaton® Locker senses a difference in wheel speed of approximately 100 rpm
 - Four wheel drive
 - External engine oil cooler
 - Heavy-duty air-to-oil cooler
 - Helps extend engine oil life under heavy loads
 - External auxiliary transmission oil cooler
 - Heavy-duty air-to-oil cooler
 - Helps provides optimal transmission performance even when operating under a heavy load or towing a trailer
 - Heavy-duty 720 cold-cranking amps battery
 - 80 Amp-hr
 - Maintenance-free with rundown protection and retained accessory power
 - 170-amp alternator
 - Fully boxed frame
 - Hydroformed front section
 - High-strength steel
 - Black recovery hooks
 - Two front frame-mounted¹
- ¹ To avoid the risk of injury, never use recovery hooks to tow a vehicle.
- Suspension Package
 - Designed to help maintain handling and ride quality while towing a trailer or carrying a load
 - Steering
 - Recirculating Ball with smart flow power steering system
 - 4-wheel antilock disc brakes
 - Help reduce wheel lockup and maintain steering control during hard braking on most slippery surfaces
 - DuraLife™ brake rotors feature a hardened surface to reduce corrosion and provide quieter braking with less vibration. DuraLife™ rotors are hardened and strengthened during the manufacturing process
 - Brake system features a corrosion-fighting process called Ferritic Nitro-Carburizing (FNC) which can double rotor life expectancy and reduce or minimize rust over non-FNC coated rotors
 - Brake pad wear indicator
 - Capless fuel fill
 - Creates a tight seal around the fuel-pump nozzle when the nozzle is fully inserted
 - Requires gasoline engine

Interior

- Chevrolet Infotainment 3 System with color touchscreen
 - AM/FM stereo
 - 7" diagonal color touchscreen¹ on WT and Custom
 - 8" diagonal color touchscreen¹ on LT
 - Bluetooth®² audio streaming for 2 active devices for compatible phones
 - Apple CarPlay™ capability for compatible phones³
 - Android Auto™ capability for compatible phone⁴

¹ Functionality varies by model. Full functionality requires compatible Bluetooth® and smartphone, and USB connectivity for some devices.

² Go to www.mychevrolet.com/learn (<http://www.mychevrolet.com/learn>) to find out which phones are compatible with the vehicle.

³ Vehicle user interface is a product of Apple and its terms and privacy statements apply. Requires compatible iPhone

and data plan rates apply. Apple CarPlay is a trademark of Apple Inc. Siri, iPhone and iTunes are trademarks for Apple Inc, registered in the U.S. and other countries.

⁴ Vehicle user interface is a product of Google and its terms and privacy statements apply. Requires the Android Auto app on Google Play and an Android compatible smartphone running Android™ 5.0 or higher. Data plan rates apply. Android Auto is a trademark of Google LLC.

- 6-speaker audio system
 - Speakers are positioned throughout the cabin for outstanding sound quality and an enjoyable listening experience
- Bluetooth®
 - Pair your compatible mobile phone to your vehicle's infotainment system¹
 - Place and receive hands-free phone calls
 - Store your phone's contact list in the system to place an outgoing call quickly using the touch-screen display or voice command system
 - With streaming audio capability, you can listen to files stored on your phone or Bluetooth digital media device

¹ Go to [my.chevrolet.com/learn](http://www.my.chevrolet.com/learn) (<http://www.my.chevrolet.com/learn>) to find out which phones are compatible with the vehicle.

- 40/20/40 split-bench front seat
 - Seating for up to 3
 - Vinyl seat trim
 - 4-way manual driver seat
 - Can be positioned forward or back and up or down
 - 4-way manual front passenger seat
 - Can be positioned forward or back and up or down
 - 60/40 split-folding rear bench seat
 - Includes child seat top tether anchor
 - Can fold one or both sides up
 - Rubberized vinyl floor covering
 - Provides good traction and convenient cleanup
 - Steering wheel
 - Manual tilt steering column
 - Allows the steering wheel to be manually adjusted up or down
 - Provides extra comfort when entering or exiting the vehicle
 - Locking security feature
 - Instrumentation
 - 6-gauge cluster
 - Speedometer, fuel level, engine temperature, tachometer, voltage and oil pressure
 - 3.5" diagonal monochromatic Driver Information Center
 - Outside temperature display
 - Located in radio display
 - Rear Seat Reminder
 - Helps to remind the driver to check the back seat(s) before leaving the vehicle¹
 - Activates when rear doors are opened and closed up to 10 minutes before or anytime while your vehicle is on
 - Under certain conditions, once the vehicle is switched off, designed to sound 5 audible chimes and display a visual message within the Driver Information Center
 - Activates only once each time the vehicle is turned on and off, and would require re-activation on a second trip
- ¹ Does not detect people or items. Always check rear seat before exiting.
- Power windows with driver express-up/down
 - Quickly raises the window or lowers it with the touch of a button
 - If an obstruction is detected, the anti-pinch feature will auto-reverse
 - Power windows with front passenger express-down
 - Quickly lowers the window with the touch of a button
 - If an obstruction is detected, the anti-pinch feature will auto-reverse
 - Power windows with rear express-down

- Power door locks
 - Programmable
 - Allows you to lock and unlock doors easily whether it's from the driver or front passenger seat or from outside using the key fob (when equipped)
- USB port
 - Plug in your smartphone, MP3 player or flash drive[†]
 - Allows you to enjoy listening to audio files through the vehicle's audio system[†]
 - Dash mounted
- [†] Not compatible with all devices.
- 12-volt auxiliary front power outlet
- May require additional optional equipment
- Single-zone climate control
 - Maintains a selected temperature
 - Manual
- Rear air vents
 - Provides cabin comfort for rear occupants
- Inside rearview manual day/night mirror
 - Adjust the tilt of the mirror to help reduce glare during nighttime driving
- Assist handles
 - Front A-pillar mounted for Driver and Passenger
 - Rear B-pillar mounted

Exterior

- 17" steel painted Silver wheels
- 17" LT245/75R17E all-season, blackwall tires
- 17" LT245/75R17E all-season, blackwall spare tire
- May require additional optional equipment
- Spare tire carrier lock
 - Helps keep spare tire secure
 - Utilizes the same key as the door and ignition
- Black front bumper
- Black rear bumper
 - With integrated CornerSteps
- CornerStep rear bumper
 - Helps make it easier to get into and out of the pickup bed
 - Located at each end of the rear bumper
 - Textured step pads to help provide secure footing
- Side BedStep
 - Black textured step pads help provide secure footing
 - Integrated on forward portion of outer bed on driver and passenger side to provide ease of access to forward portion of the bed
- Black beltline moldings
- Cargo tie-downs
 - 12-fixed rated at 500 lbs. per corner
- Grille (Front grille bar with "CHEVROLET" molded in Black, includes Black mesh inserts with small Gold bowtie emblem.)
- Halogen reflector headlamps
 - Includes automatic exterior lamp control
- Incandescent taillamps with stop and reverse lights
- Cab-mounted cargo area lamps
 - With switch in switch bank left of the steering wheel
 - Illuminates the cargo bed area
- Black outside vertical trailering mirrors
 - Lower convex mirrors
 - Manual folding/extending
 - Extends 3.31-inches
- Black mirror caps

- Solar-absorbing glass
 - Helps minimize the amount of solar rays entering the vehicle cabin.
- Tailgate and bed rail protection caps
- Locking tailgate
 - Tailgate locks and unlocks with the same key as the ignition and door
- Tailgate without EZ Lift
- Black door handles

Safety

- **StabiliTrak, electronic stability control system with traction control**
 - Automatically helps enhance control, particularly during emergency maneuvers, by adjusting the brakes and engine torque to help you stay on your intended path
 - Activates when vehicle sensors detect a difference between the driver's intended path and the direction the vehicle is actually travelling
 - Includes Traction Control that detects wheel slippage and applies brake pressure and/or reduces engine power to help the driver maintain control when accelerating on wet or snow-covered roads
 - Includes Brake Assist which detects rapid brake pedal applications due to emergency braking situations and provides additional braking via the Antilock Brake System (ABS) module
 - Includes Trailer Sway Control
 - Hill Start Assist
 - **Daytime Running Lamps**
 - Includes automatic exterior lamp control
 - **6 airbags**
 - Dual-stage frontal airbags for driver and front outboard passenger¹
 - Seat-mounted side-impact airbags for driver and front outboard passenger¹
 - Head-curtain airbags for outboard seating positions¹
 - Includes front outboard Passenger Sensing System for frontal outboard passenger airbag and illuminates a status light that indicates whether the airbag is on or off¹
- ¹ Always use seat belts and child restraints. Children are safer when properly secured in a rear seat in the appropriate child restraint. See the Owner's Manual for more information.
- **Rear Vision Camera**
 - When in Reverse at low speeds, provides you a view of the scene directly behind the vehicle on the Infotainment screen to help you park and avoid nearby objects¹
 - Dynamic guidelines laid over the display image assist in parking maneuvers by showing the vehicle's path
 - Tailgate must be in the raised position for the Rear Vision Camera to operate properly
- ¹ Safety or driver assistance features are no substitute for the driver's responsibility to operate the vehicle in a safe manner. The driver should remain attentive to traffic, surroundings and road conditions at all times. Visibility, weather, and road conditions may affect feature performance. Read the vehicle's owner's manual for more important feature limitations and information.
- **Hitch Guidance**
 - Uses the Rear Vision Camera display to provide you with a guideline to help align your vehicle with a trailer¹
 - Provides a camera view to briefly check the trailer when driving
- ¹ Safety or driver assistance features are no substitute for the driver's responsibility to operate the vehicle in a safe manner. The driver should remain attentive to traffic, surroundings and road conditions at all times. Visibility, weather, and road conditions may affect feature performance. Read the vehicle's owner's manual for more important feature limitations and information.
- **Teen Driver**
 - This configurable feature lets you activate customizable vehicle settings associated with a key fob to help encourage better driving behavior¹
 - It can limit certain vehicle features, and automatically turns on certain safety systems if vehicle is equipped¹
 - An in-vehicle report card gives you information on driving habits and helps you to continue to coach your new driver¹