

TOWN OF CROWN POINT HIGHWAY DEPARTMENT

TANDEM PLOW TRUCK MANUAL

SPECIFICATION PROPOSAL

| Data Code | Description | Weight Front | Weight Rear |
|------------------------------|---|-----------------|----------------|
| Price Level | | | |
| PRL-23T | WESTERN STAR 4700 PRL-23T (EFF:01/21/20) | | |
| Data Version | | | |
| DRL-018 | SPECPRO21 DATA RELEASE VER 018 | | |
| Vehicle Configuration | | | |
| 001-450 | 4700 SET-FORWARD FRONT AXLE CHASSIS | 9,100 | 6,570 |
| 004-221 | 2021 MODEL YEAR SPECIFIED | | |
| 002-003 | SET FORWARD AXLE - TRUCK | | |
| 019-006 | TRAILER TOWING PROVISION AT END OF FRAME | 10 | 10 |
| 003-001 | LH PRIMARY STEERING LOCATION | | |
| General Service | | | |
| AA1-002 | TRUCK CONFIGURATION | | |
| AA6-001 | DOMICILED, USA 50 STATES (INCLUDING CALIFORNIA AND CARB OPT-IN STATES) | | |
| A85-011 | CONSTRUCTION SERVICE | | |
| A84-1GM | GOVERNMENT BUSINESS SEGMENT | | |
| AA4-003 | DRY BULK COMMODITY | | |
| AA5-002 | TERRAIN/DUTY: 100% (ALL) OF THE TIME, IN TRANSIT, IS SPENT ON PAVED ROADS | | |
| AB1-008 | MAXIMUM 8% EXPECTED GRADE | | |
| AB5-001 | SMOOTH CONCRETE OR ASPHALT PAVEMENT - MOST SEVERE IN-TRANSIT (BETWEEN SITES) ROAD SURFACE | | |
| 995-1A5 | WESTERN STAR VOCATIONAL WARRANTY | | |
| A66-99D | EXPECTED FRONT AXLE(S) LOAD : 20000.0 lbs | | |

| Data Code | Description | Weight Front | Weight Rear |
|-----------|---|--------------|-------------|
| A68-99D | EXPECTED REAR DRIVE AXLE(S) LOAD : 46000.0 lbs | | |
| A63-99D | EXPECTED GROSS VEHICLE WEIGHT CAPACITY : 66000.0 lbs | | |

Truck Service

| | | | |
|---------|-------------------------------------|--|--|
| AA3-018 | FRONT PLOW/END DUMP BODY | | |
| A88-99D | EXPECTED TRUCK BODY LENGTH : 0.0 ft | | |

Engine

| | | | |
|---------|--|--|--|
| 101-2YB | DETROIT DD13 12.8L 470 HP @ 1625 RPM, 1900 GOV RPM, 1650 LB/FT @ 975 RPM | | |
|---------|--|--|--|

Electronic Parameters

| | | | |
|---------|--|--|--|
| 79A-067 | 67 MPH ROAD SPEED LIMIT | | |
| 79B-000 | CRUISE CONTROL SPEED LIMIT SAME AS ROAD SPEED LIMIT | | |
| 79G-010 | 20 MINUTES IDLE SHUTDOWN WITH CLUTCH AND SERVICE BRAKE OVERRIDE | | |
| 79K-001 | PTO MODE ENGINE RPM LIMIT - 600 RPM | | |
| 79M-002 | PTO MODE BRAKE OVERRIDE - SERVICE BRAKE APPLIED OR PARK BRAKE NOT APPLIED | | |
| 79N-001 | PTO MODE CLUTCH OVERRIDE - CLUTCH ENABLED | | |
| 79P-001 | PTO RPM WITH CRUISE SET SWITCH - 600 RPM | | |
| 79Q-001 | PTO RPM WITH CRUISE RESUME SWITCH - 600 RPM | | |
| 79S-002 | PTO MODE CANCEL VEHICLE SPEED - 6 MPH | | |
| 79T-001 | PTO MODE RPM INCREMENT - 25 RPM | | |
| 79W-001 | ONE REMOTE PTO SPEED | | |
| 79X-035 | PTO SPEED 1 SETTING - 650 RPM | | |
| 80D-001 | SOFT CRUISE CONTROL ENABLED | | |
| 80G-001 | PTO MINIMUM RPM - 600 | | |
| 80K-003 | TEMPERATURE OVERRIDE BELOW 30 DEGREES AND ABOVE 65 DEGREES AMBIENT TEMPERATURE | | |

Engine Equipment

| | | | |
|---------|--|--|--|
| 99C-017 | 2016-2019 ONBOARD DIAGNOSTICS/2010 EPA/CARB/FINAL GHG17 CONFIGURATION | | |
| 99D-011 | 2008 CARB EMISSION CERTIFICATION - CLEAN IDLE (INCLUDES 6X4 INCH LABEL ON LOWER FORWARD CORNER OF DRIVER DOOR) | | |
| 13E-001 | STANDARD OIL PAN | | |
| 105-001 | ENGINE MOUNTED OIL CHECK AND FILL | | |
| 133-004 | ONE PIECE VALVE COVER | | |

| Data Code | Description | Weight Front | Weight Rear |
|-----------|---|--------------|-------------|
| 014-108 | SIDE OF HOOD AIR INTAKE WITH FIREWALL MOUNTED DONALDSON AIR CLEANER WITH Safety ELEMENT AND INSIDE/OUTSIDE AIR WITH SNOW DOOR | 10 | |
| 124-1E1 | DR 12V 200 AMP 28-SI QUADRAMOUNT PAD ALTERNATOR WITH REMOTE BATTERY VOLT SENSE | | |
| 292-236 | (3) DTNA GENUINE, FLOODED STARTING, MIN 3000CCA, 555RC, THREADED STUD BATTERIES | -10 | |
| 290-1CD | BATTERY BOX WITH ALUMINUM COVER MOUNTED SHORT SIDE TO RAIL | 45 | 10 |
| 282-003 | SINGLE BATTERY BOX FRAME MOUNTED LH SIDE BACK OF CAB | | |
| 291-017 | WIRE GROUND RETURN FOR BATTERY CABLES WITH ADDITIONAL FRAME GROUND RETURN | | |
| 289-012 | NON-POLISHED DIAMOND PLATE BATTERY BOX COVER | | |
| 293-072 | POSITIVE LOAD DISCONNECT WITH DASH MOUNTED CONTROL SWITCH | 8 | |
| 306-019 | LOW VOLTAGE BATTERY DISCONNECT AT 12.3 VOLTS FOR ISOLATED CIRCUITS WITH LOCAL ALARM | | |
| 180-100 | EATON ADVANTAGE 15-1/2 INCH SELF ADJUSTING CLUTCH | -40 | |
| 183-008 | TORQUE LIMITING CLUTCH BRAKE | | |
| 181-002 | ZERK FITTING WITH EXTENSION HOSE AT CLUTCH RELEASE BEARING | | |
| 182-005 | HYDRAULIC CLUTCH CONTROL | | |
| 107-044 | BW MODEL BA-921 19.0 CFM SINGLE CYLINDER AIR COMPRESSOR WITH SAFETY VALVE | | |
| 131-013 | AIR COMPRESSOR DISCHARGE LINE | | |
| 152-041 | ELECTRONIC ENGINE INTEGRAL SHUTDOWN PROTECTION SYSTEM | | |
| 128-002 | JACOBS COMPRESSION BRAKE | | |
| 016-1C2 | RH OUTBOARD UNDER STEP MOUNTED HORIZONTAL AFTERTREATMENT SYSTEM ASSEMBLY WITH RH B-PILLAR MOUNTED VERTICAL TAILPIPE | | |
| 28F-002 | ENGINE AFTERTREATMENT DEVICE, AUTOMATIC OVER THE ROAD REGENERATION AND DASH MOUNTED REGENERATION REQUEST SWITCH | | |
| 239-026 | 10 FOOT 06 INCH (126 INCH+0/-5.9 INCH) EXHAUST SYSTEM HEIGHT | | |
| 233-017 | STANDARD CURVE BRIGHT UPPER STACK(S) | | |
| 237-1CR | RH CURVED VERTICAL TAILPIPE B-PILLAR MOUNTED ROUTED FROM STEP | | |

| Data Code | Description | Weight Front | Weight Rear |
|---------------------|---|--------------|-------------|
| 23U-002 | 13 GALLON DIESEL EXHAUST FLUID TANK | 35 | 10 |
| 30N-003 | 100 PERCENT DIESEL EXHAUST FLUID FILL | | |
| 23Y-001 | STANDARD DIESEL EXHAUST FLUID PUMP MOUNTING | | |
| 23Z-001 | POLISHED ALUMINUM DIAMOND PLATE DIESEL EXHAUST FLUID TANK COVER | 20 | 10 |
| 43X-002 | LH MEDIUM DUTY STANDARD DIESEL EXHAUST FLUID TANK LOCATION | | |
| 242-001 | STAINLESS STEEL AFTERTREATMENT DEVICE/MUFFLER/TAILPIPE SHIELD | | |
| 273-036 | BORG WARNER (KYSOR) REAR AIR ON/OFF ENGINE FAN CLUTCH | | |
| 276-002 | AUTOMATIC FAN CONTROL WITH DASH SWITCH AND INDICATOR LIGHT, NON ENGINE MOUNTED | | |
| 110-068 | DDC SUPPLIED ENGINE MOUNTED FUEL FILTER/FUEL WATER SEPARATOR WITH WATER-IN-FUEL INDICATOR | | |
| 118-001 | FULL FLOW OIL FILTER | | |
| 266-057 | 1500 SQUARE INCH ALUMINUM RADIATOR | | |
| 267-006 | MOUNTING FOR FIREWALL MOUNTED SURGE TANK | | |
| 103-039 | ANTIFREEZE TO -34F, OAT (NITRITE AND SILICATE FREE) EXTENDED LIFE COOLANT | | |
| 171-007 | GATES BLUE STRIPE COOLANT HOSES OR EQUIVALENT | | |
| 172-001 | CONSTANT TENSION HOSE CLAMPS FOR COOLANT HOSES | | |
| 270-023 | HDEP FIXED RATIO COOLANT PUMP AND RADIATOR DRAIN VALVE | | |
| 168-998 | NO RADIATOR/OIL PAN GUARD | -5 | |
| 360-013 | 1350 ADAPTER FLANGE FOR FRONT PTO PROVISION | 25 | |
| 138-005 | PHILLIPS-TEMRO 1500 WATT/115 VOLT BLOCK HEATER | | |
| 166-005 | PHILLIPS-TEMRO 300 WATT/115 VOLT OIL PREHEATER | | |
| 140-022 | CHROME ENGINE HEATER RECEPTACLE MOUNTED UNDER LH DOOR | | |
| 134-001 | ALUMINUM FLYWHEEL HOUSING | | |
| 155-076 | DELCO 12V MOD 3.175-39MT+ STARTER WITH ENGINE ECU THERMAL PROTECTION AND INTEGRATED MAGNETIC SWITCH | -35 | |
| Transmission | | | |
| 342-445 | EATON FULLER RTO-16908LL TRANSMISSION | 70 | 20 |

| Data Code | Description | Weight Front | Weight Rear |
|---------------------------------|---|-----------------|----------------|
| Transmission Equipment | | | |
| 85P-998 | NO REAR PTO TRANSMISSION RANGE | | |
| 353-072 | BODY LIGHTING POWER WIRED TO CUSTOMER INTERFACE CONNECTOR WITH SEPARATE & COMBO STOP/TURN | | |
| 347-002 | ALUMINUM CLUTCH HOUSING | -50 | |
| 362-1T6 | CUSTOMER INSTALLED CHELSEA 489 SERIES PTO | | |
| 363-003 | PTO MOUNTING, BOTTOM OF MAIN TRANSMISSION | | |
| 341-017 | MAGNETIC PLUGS, ENGINE DRAIN, TRANSMISSION FILL AND DRAIN, AXLE(S) FILL AND DRAIN | | |
| 345-001 | PAINTED SHIFT LEVER, SOLID LINKAGE | | |
| 370-015 | WATER TO OIL TRANSMISSION COOLER, IN RADIATOR END TANK | | |
| 35T-003 | SYNTHETIC TRANSMISSION LUBE | | |
| Front Axle and Equipment | | | |
| 400-1BB | DETROIT DA-F-20.0-5 20,000# FL1 71.0 KPI/3.74 DROP SINGLE FRONT AXLE | | |
| 402-030 | MERITOR 16.5X6 Q+ CAST SPIDER CAM FRONT BRAKES, DOUBLE ANCHOR, FABRICATED SHOES | | |
| 403-002 | NON-ASBESTOS FRONT BRAKE LINING | | |
| 419-023 | CONMET CAST IRON FRONT BRAKE DRUMS | | |
| 427-001 | FRONT BRAKE DUST SHIELDS | 5 | |
| 409-006 | FRONT OIL SEALS | | |
| 408-001 | VENTED FRONT HUB CAPS WITH WINDOW, CENTER AND SIDE PLUGS - OIL | | |
| 416-022 | STANDARD SPINDLE NUTS FOR ALL AXLES | | |
| 405-003 | HALDEX AUTOMATIC FRONT SLACK ADJUSTERS | | |
| 406-001 | STANDARD KING PIN BUSHINGS | | |
| 536-055 | TRW THP-60 POWER STEERING WITH RCH45 AUXILIARY GEAR | 90 | |
| 539-003 | POWER STEERING PUMP | | |
| 534-003 | 4 QUART POWER STEERING RESERVOIR | | |
| 533-001 | OIL/AIR POWER STEERING COOLER | | |
| 40T-003 | SYNTHETIC 40/50W FRONT AXLE LUBE | | |
| Front Suspension | | | |
| 620-068 | 23,000# FLAT LEAF FRONT SUSPENSION | 120 | |
| 619-004 | GRAPHITE BRONZE BUSHINGS WITH SEALS - FRONT SUSPENSION | | |

| Data Code | Description | Weight Front | Weight Rear |
|--------------------------------|---|--------------|-------------|
| 410-001 | FRONT SHOCK ABSORBERS | | |
| Rear Axle and Equipment | | | |
| 420-059 | RT-46-164P 46,000# R-SERIES TANDEM REAR AXLE | | 630 |
| 421-430 | 4.30 REAR AXLE RATIO | | |
| 424-001 | IRON REAR AXLE CARRIER WITH STANDARD AXLE HOUSING | | |
| 386-067 | RPL25SD MERITOR MAIN DRIVELINE | 40 | 40 |
| 388-039 | RPL20 MERITOR INTERAXLE DRIVELINE | | |
| 452-006 | DRIVER CONTROLLED TRACTION DIFFERENTIAL - BOTH TANDEM REAR AXLES | | 30 |
| 878-023 | (1) INTERAXLE LOCK VALVE, (1) DRIVER CONTROLLED DIFFERENTIAL LOCK FORWARD-REAR AND REAR-REAR AXLE VALVE | | |
| 87A-005 | INDICATOR LIGHT FOR EACH INTERAXLE LOCKOUT SWITCH | | |
| 87B-008 | INDICATOR LIGHT FOR EACH DRIVER CONTROLLED TRACTION DEVICE SWITCH | | |
| 423-020 | MERITOR 16.5X7 Q+ CAST SPIDER CAM REAR BRAKES, DOUBLE ANCHOR, FABRICATED SHOES | | |
| 433-002 | NON-ASBESTOS REAR BRAKE LINING | | |
| 434-011 | BRAKE CAMS AND CHAMBERS ON FORWARD SIDE OF DRIVE AXLE(S) | | |
| 451-023 | CONMET CAST IRON REAR BRAKE DRUMS | | |
| 425-002 | REAR BRAKE DUST SHIELDS | | 10 |
| 440-006 | REAR OIL SEALS | | |
| 426-109 | WABCO TRISTOP D-IBV LONGSTROKE 2-DRIVE AXLE SPRING PARKING CHAMBERS | | |
| 428-003 | HALDEX AUTOMATIC REAR SLACK ADJUSTERS | | |
| 41T-002 | CURRENT AVAILABLE SYNTHETIC 75W-90 REAR AXLE LUBE | | |
| Rear Suspension | | | |
| 622-286 | TUFTRAC 46,000# REAR SPRING SUSPENSION | | 490 |
| 621-055 | TUFTRAC STANDARD RIDE HEIGHT | | |
| 431-003 | AXLE CLAMPING GROUP | | |
| 624-028 | 56 INCH AXLE SPACING | | |
| 623-006 | FORE/AFT AND TRANSVERSE CONTROL RODS | | |
| 439-002 | REAR SHOCK ABSORBERS - TWO AXLES (TANDEM) | | 40 |
| Brake System | | | |
| 490-100 | WABCO 4S/4M ABS | | |

| Data Code | Description | Weight Front | Weight Rear |
|-----------|--|--------------|-------------|
| 871-001 | REINFORCED NYLON, FABRIC BRAID AND WIRE BRAID CHASSIS AIR LINES | | |
| 904-001 | FIBER BRAID PARKING BRAKE HOSE | | |
| 412-001 | STANDARD BRAKE SYSTEM VALVES | | |
| 432-003 | RELAY VALVE WITH 5-8 PSI CRACK PRESSURE, NO REAR PROPORTIONING VALVE | | |
| 480-086 | BW AD-9SI BRAKE LINE AIR DRYER WITH HEATER | | |
| 479-006 | AIR DRYER MOUNTED OUTBOARD ON RH RAIL | | |
| 460-007 | ALUMINUM AIR BRAKE RESERVOIRS | -15 | -15 |
| 607-006 | CLEAR FRAME RAIL 36 INCHES FROM BACK OF CAB INSIDE/OUTBOARD AND BELOW RH FRAME RAIL | | |
| 477-016 | BW DV-2 AUTO DRAIN VALVE WITHOUT HEATER TO WET TANK; DRAIN VALVE CABLES ON ALL OTHER TANKS | | |

Trailer Connections

| | | | |
|---------|--|--|--|
| 914-025 | AIR CONNECTIONS TO END OF FRAME WITH GLAD HANDS FOR TRUCK AND DUST COVERS | | |
| 296-010 | PRIMARY CONNECTOR/RECEPTACLE WIRED FOR SEPARATE STOP/TURN, ABS CENTER PIN POWERED THROUGH IGNITION | | |
| 303-025 | SAE J560 7-WAY PRIMARY TRAILER CABLE RECEPTACLE MOUNTED END OF FRAME | | |
| 1AZ-998 | NO TRAILER RECEPTACLE BRACKET | | |

Wheelbase & Frame

| | | | |
|---------|---|-----|-----|
| 545-555 | 5550MM (219 INCH) WHEELBASE | | |
| 546-1B2 | 1/2X3.64X11-7/8 INCH STEEL FRAME (12.7MMX301.6MM/0.5X11.88 INCH) 120KSI | 460 | 200 |
| 547-034 | PARTIAL INNER FRAME REINFORCEMENT AT FRONT SUSPENSION | 195 | -5 |
| 548-803 | BODY COMPANY INSTALLED ADDITIONAL FRONT FRAME REINFORCEMENT FOR SNOW PLOW | | |
| 552-028 | 1525MM (60 INCH) REAR FRAME OVERHANG | | |
| 55W-005 | FRAME OVERHANG RANGE: 51 INCH TO 60 INCH | 10 | -60 |
| 549-002 | 24 INCH INTEGRAL FRONT FRAME EXTENSION | 135 | -10 |
| AC8-99D | CALC'D BACK OF CAB TO REAR SUSP C/L (CA) : 137.28 in | | |
| AE8-99D | CALCULATED EFFECTIVE BACK OF CAB TO REAR SUSPENSION C/L (CA) : 134.28 in | | |
| AE4-99D | CALC'D FRAME LENGTH - OVERALL : 330.2 | | |
| ZF1-99D | FRAME HEIGHT TOP FRONT UNLADEN : 45.36 in | | |

| Data Code | Description | Weight Front | Weight Rear |
|-----------|--|--------------|-------------|
| ZF2-99D | FRAME HEIGHT TOP FRONT LADEN : 41.73 in | | |
| ZF3-99D | FRAME HEIGHT TOP REAR UNLADEN : 44.73 in | | |
| ZF4-99D | FRAME HEIGHT TOP REAR LADEN : 42.13 in | | |
| FSS-0LH | CALCULATED FRAME SPACE LH SIDE : 37.52 in | | |
| FSS-0RH | CALCULATED FRAME SPACE RH SIDE : 177.19 in | | |
| AM6-99D | CALC'D SPACE AVAILABLE FOR DECKPLATE : 137.78 in | | |
| 553-001 | SQUARE END OF FRAME | | |
| 559-001 | STANDARD WEIGHT ENGINE CROSSMEMBER | | |
| 561-001 | STANDARD CROSSMEMBER BACK OF TRANSMISSION | | |
| 562-001 | STANDARD MIDSHIP #1 CROSSMEMBER(S) | | |
| 572-001 | STANDARD REARMOST CROSSMEMBER | | |
| 565-002 | HEAVY DUTY SUSPENSION CROSSMEMBER | | |
| 568-001 | STANDARD WEIGHT REAR SUSPENSION CROSSMEMBER | | |

Chassis Equipment

| | | | |
|---------|--|--|--|
| 556-1E5 | 14 INCH PAINTED STEEL BUMPER | | |
| 574-001 | BUMPER MOUNTING FOR SINGLE LICENSE PLATE | | |
| 586-015 | FRONT ANTI-SPRAY CAB MOUNTED MUDFLAPS | | |
| 551-007 | GRADE 8 THREADED HEX HEADED FRAME FASTENERS | | |
| 44Z-002 | EXTERIOR HARNESSSES WRAPPED IN ABRASION TAPE | | |

Fuel Tanks

| | | | |
|---------|--|----|--|
| 204-156 | 100 GALLON/378 LITER ALUMINUM FUEL TANK - LH | 20 | |
| 218-006 | 25 INCH DIAMETER FUEL TANK(S) | | |
| 215-005 | PLAIN ALUMINUM/PAINTED STEEL FUEL/HYDRAULIC TANK(S) WITH PAINTED BANDS | | |
| 212-007 | FUEL TANK(S) FORWARD | | |
| 664-001 | PLAIN STEP FINISH | | |
| 205-001 | FUEL TANK CAP(S) | | |
| 122-1K3 | DAVCO 487 FUEL/WATER SEPARATOR WITH ESOE | 15 | |
| 216-020 | EQUIFLO INBOARD FUEL SYSTEM | | |
| 202-016 | HIGH TEMPERATURE REINFORCED NYLON FUEL LINE | | |
| 213-001 | INSULATION FOR FUEL LINES | 2 | |

| Data Code | Description | Weight Front | Weight Rear |
|---------------------|---|--------------|-------------|
| Tires | | | |
| 093-0TB | MICHELIN XZY-3 425/65R22.5 20 PLY RADIAL FRONT TIRES | 196 | |
| 094-2A7 | MICHELIN XDS2 11R22.5 16 PLY RADIAL REAR TIRES | | 192 |
| Hubs | | | |
| 418-060 | CONMET PRESET PLUS PREMIUM IRON FRONT HUBS | | |
| 450-060 | CONMET PRESET PLUS PREMIUM IRON REAR HUBS | | |
| Wheels | | | |
| 502-091 | ACCURIDE 29374A 22.5X12.25 10-HUB PILOT 4.75 INSET 10-HAND ALUMINUM DISC FRONT WHEELS | -8 | |
| 505-1M9 | ALCOA LVL ONE 88565X 22.5X8.25 10-HUB PILOT HD 10-HAND ALUMINUM DISC REAR WHEELS | | -160 |
| 524-002 | POLISHED FRONT WHEELS; INSIDE AND OUTSIDE | | |
| 525-001 | POLISHED REAR WHEELS; OUTSIDE OF OUTER WHEELS ONLY | | |
| 50T-998 | NO FRONT AXLE WHEEL/HUB COVER | | |
| 496-011 | FRONT WHEEL MOUNTING NUTS | | |
| 497-011 | REAR WHEEL MOUNTING NUTS | | |
| 498-011 | NYLON WHEEL GUARDS FRONT AND REAR ALL INTERFACES | | |
| Cab Exterior | | | |
| 829-1A8 | 110 INCH BBC STEEL CONVENTIONAL CAB | | |
| 82A-023 | WESTERN STAR PAINTED ALUMINUM CAB SKIRT | | |
| 650-044 | AIR CAB MOUNTS WITH CHECK VALVE | | |
| 705-056 | STAINLESS STEEL SILL PLATES WITH RACEWAY | 5 | |
| 648-002 | NONREMOVABLE BUGSCREEN MOUNTED BEHIND GRILLE | | |
| 667-001 | FRONT FENDERS | | |
| 754-001 | 2 INCH FENDER EXTENSIONS | 5 | |
| 678-034 | LH AND RH EXTERIOR GRAB HANDLES WITH RUBBER INSERTS AND RH INTERIOR GRAB HANDLE MOUNTED TO A POST | | |
| 646-008 | STATIONARY BRIGHT FINISH GRILLE | | |
| 65X-003 | CHROME HOOD MOUNTED AIR INTAKE GRILLE | | |
| 640-008 | GALVANEALD STEEL SEVERE SERVICE CAB | | |

| Data Code | Description | Weight Front | Weight Rear |
|-----------|---|-----------------|----------------|
| 644-006 | FIBERGLASS HOOD WITH ACCESS HATCHES | 10 | |
| 690-007 | HOOD LINER INSULATION WITH SINGLE FIREWALL INSULATION | | |
| 727-012 | DUAL HADLEY SD-978 26 INCH RECTANGULAR AIR HORNS | | |
| 726-001 | SINGLE ELECTRIC HORN | | |
| 728-002 | DUAL HORN SHIELDS | | |
| 657-1AG | DOORS AND IGNITION KEYED THE SAME | | |
| 575-001 | REAR LICENSE PLATE MOUNT END OF FRAME | | |
| 327-064 | DUAL AMBER LED CLASS I STROBE LIGHTS WITH STAINLESS STEEL BRACKETS ABOVE CAB DOORS | 20 | |
| 312-031 | SINGLE RECTANGULAR H4 HALOGEN HEADLIGHTS WITH BRIGHT BEZELS | | |
| 302-022 | LED MARKER LAMPS | | |
| 314-824 | WIRING AND SWITCH FOR CUSTOMER FURNISHED SNOW PLOW LAMPS WITH DUAL CONNECTIONS AT BUMPER | | |
| 294-001 | INTEGRAL STOP/TAIL/BACKUP LIGHTS | | |
| 300-015 | STANDARD FRONT TURN SIGNAL LAMPS | | |
| 744-1DH | DUAL AERO BRIGHT FINISH HEATED DUAL AXIS 1-PIECE MOTORIZED MIRRORS WITH LIGHTS, LH AND RH REMOTE AND INTEGRAL CONVEX MIRRORS | 20 | |
| 797-002 | CAB MOUNTED MIRRORS | | |
| 796-001 | 102 INCH EQUIPMENT WIDTH | | |
| 743-1AX | DUAL BRIGHT FINISH HEATED CONVEX MIRRORS WITH MANUAL ADJUSTMENT AND DUAL AXIS FOR 1-PIECE PRIMARY MIRRORS | | |
| 74A-001 | RH DOWN VIEW MIRROR | | |
| 729-001 | STANDARD SIDE/REAR REFLECTORS | | |
| 677-054 | RH AFTERTREATMENT SYSTEM CAB ACCESS WITH PLAIN DIAMOND PLATE COVER | | |
| 764-002 | STAINLESS STEEL EXTERIOR SUN VISOR | 28 | |
| 768-046 | 17.5X35 INCH TINTED REAR WINDOW | | |
| 661-006 | TINTED DOOR GLASS | | |
| 654-011 | RH AND LH ELECTRIC POWERED WINDOWS | 4 | |
| 663-023 | 2-PIECE ROPED-IN HEATED WIPER PARK SOLAR GREEN GLASS WINDSHIELD | | |
| 659-026 | 2 GALLON WINDSHIELD WASHER RESERVOIR WITH FLUID LEVEL INDICATOR, MOUNTED UNDER CAB, WITH REMOTE FILL | | |

Cab Interior

707-1D0 GRAY VINYL BASE INTERIOR

| Data Code | Description | Weight Front | Weight Rear |
|-----------|--|--------------|-------------|
| 70K-005 | BLACK HARD TRIM | | |
| 706-048 | PREMIUM LEFT HAND DOOR TRIM WITH CHERRY ACCENT | | |
| 708-048 | PREMIUM RIGHT HAND DOOR TRIM WITH CHERRY ACCENT | | |
| 772-007 | BLACK MATS WITH DOUBLE INSULATION | | |
| 785-007 | DASH MOUNTED ASH TRAY AND LIGHTER, DRIVER SIDE | | |
| 691-001 | FORWARD ROOF MOUNTED CONSOLE | | |
| 697-012 | 14"X7.75" DOCUMENT POUCH MOUNTED ON BACK WALL BETWEEN SEATS | | |
| 693-025 | LH AND RH DOOR MAP POCKETS | | |
| 741-015 | (2) COAT HOOKS ON BACKWALL OF CAB | | |
| 742-032 | (1) DOUBLE CUP HOLDER WITH CELL PHONE HOLDER LH OR RH DASH | | |
| 680-034 | TWO-TONE CHARCOAL UPPER/COOL GRAY LOWER SOFT TOUCH WING DASH WITH BLACK DRIVER SIDE COSMETIC UNDER DASH COVER | | |
| 720-003 | 5 LB. FIRE EXTINGUISHER | 10 | |
| 700-023 | HEATER, DEFROSTER AND AIR CONDITIONER WITH CONSTANT TEMPERATURE CONTROL AND COSMETIC COVER | | |
| 701-016 | HVAC DUCTING WITH FOAM MAIN FRESH AIR FILTER | | |
| 703-005 | MAIN HVAC CONTROLS WITH RECIRCULATION SWITCH | | |
| 170-045 | STANDARD HEATER PLUMBING WITH BALL SHUTOFF VALVES AT SUPPLY LINES ONLY | | |
| 130-041 | VALEO HEAVY DUTY A/C REFRIGERANT COMPRESSOR | | |
| 698-001 | RADIATOR MOUNTED AIR CONDITIONER CONDENSER | | |
| 702-002 | BINARY CONTROL, R-134A | | |
| 739-002 | ADDITIONAL CAB SIDEWALL INSULATION | 60 | 10 |
| 285-033 | AUTOMATIC SELF-RESET CIRCUIT BREAKERS/FUSES IN DASH POWER DISTRIBUTION BOXES AND FUSES IN AUXILIARY POWER DISTRIBUTION BOXES | | |
| 324-075 | DOOR ACTIVATED DOME LIGHT, UNDER DASH LIGHT AND LH AND RH DOOR MOUNTED COURTESY LIGHTS | | |
| 655-001 | CAB DOOR LATCHES WITH MANUAL DOOR LOCKS | | |
| 722-028 | TRIANGULAR REFLECTORS KIT WITHOUT FLARES SHIPPED LOOSE IN CAB | 10 | |

| Data Code | Description | Weight Front | Weight Rear |
|-----------|--|--------------|-------------|
| 756-1DD | BASIC HIGH BACK AIR SUSPENSION DRIVER SEAT WITH 1 CHAMBER AIR LUMBAR, INTEGRATED CUSHION EXTENSION AND REAR CUSHION TILT | | |
| 760-1DC | BASIC HIGH BACK NON SUSPENSION PASSENGER SEAT | | |
| 759-007 | DUAL DRIVER SEAT ARMRESTS, NO PASSENGER SEAT ARMRESTS | 4 | |
| 758-1AA | GRAY VINYL DRIVER SEAT COVER | | |
| 761-1AA | GRAY VINYL PASSENGER SEAT COVER | | |
| 763-003 | 3 POINT DRIVER AND PASSENGER SEAT BELT RETRACTORS | | |
| 532-002 | ADJUSTABLE TILT AND TELESCOPING STEERING COLUMN | | |
| 540-045 | 4-SPOKE 18 INCH (450MM) LEATHER WRAPPED STEERING WHEEL WITH SWITCHES | | |
| 765-002 | DRIVER AND PASSENGER INTERIOR SUN VISORS | | |

Instruments & Controls

| | | | |
|---------|---|---|---|
| 185-002 | NON-ADJUSTABLE SUSPENDED PEDALS | | |
| 106-002 | ELECTRONIC FOOT ACCELERATOR | | |
| 870-002 | BRIGHT ARGENT FINISH GAUGE BEZELS | | |
| 732-047 | FIGURED CHERRY WOODGRAIN ULTRA GLOSS FINISH DRIVER INSTRUMENT PANEL | | |
| 734-047 | FIGURED CHERRY WOODGRAIN ULTRA GLOSS FINISH CENTER INSTRUMENT PANEL | | |
| 486-001 | LOW AIR PRESSURE INDICATOR LIGHT AND AUDIBLE ALARM | | |
| 840-002 | 2 INCH PRIMARY AND SECONDARY AIR PRESSURE GAUGES | | |
| 198-024 | FILTERMINDER DASH MOUNTED AIR RESTRICTION GAUGE | 2 | |
| 721-021 | 87 DB TO 112 DB SELF-ADJUSTING BACKUP ALARM | | 3 |
| 149-015 | ELECTRONIC CRUISE CONTROL WITH CONTROLS ON STEERING WHEEL SPOKES | | |
| 156-007 | KEY OPERATED IGNITION SWITCH AND INTEGRAL START POSITION; 4 POSITION OFF/RUN/START/ACCESSORY | | |
| 811-041 | ICU4ME DRIVER MESSAGE CENTER WITH GRAPHICAL DISPLAY, BLACK FACE GAUGES, DIAGNOSTICS AND DATA LINKED | | |
| 160-038 | HEAVY DUTY ONBOARD DIAGNOSTICS INTERFACE CONNECTOR LOCATED BELOW LH DASH | | |
| 844-001 | 2 INCH ELECTRIC FUEL GAUGE | | |

| Data Code | Description | Weight Front | Weight Rear |
|-----------|---|-----------------|----------------|
| 845-011 | FUEL FILTER RESTRICTION INDICATOR | | |
| 148-085 | EMISSIONS LIMITED IDLE ADJUST | | |
| 4C0-010 | CUSTOMER SPECIFIED SWITCH ACTUATORS FOR EXTRA SWITCHES | | |
| 44Y-002 | CUSTOMER INTERFACE CONNECTOR LOCATED BETWEEN SEATS WITH BLUNTCUTS | | |
| 856-001 | ELECTRICAL ENGINE COOLANT TEMPERATURE GAUGE | | |
| 854-001 | ENGINE OIL TEMPERATURE GAUGE | | |
| 864-001 | 2 INCH TRANSMISSION OIL TEMPERATURE GAUGE | | |
| 867-004 | ELECTRONIC OUTSIDE TEMPERATURE SENSOR DISPLAY IN DRIVER MESSAGE CENTER | | |
| 372-063 | (1) DASH MOUNTED PTO SWITCH WITH INDICATOR LAMP FOR CUSTOMER INSTALLED PTO | 10 | |
| 852-002 | ELECTRIC ENGINE OIL PRESSURE GAUGE | | |
| 746-115 | AM/FM/WB WORLD TUNER RADIO WITH BLUETOOTH AND USB AND AUXILIARY INPUTS, J1939 | 10 | |
| 747-002 | ROOF/OVERHEAD CONSOLE MOUNTED RADIO | | |
| 750-004 | (4) RADIO SPEAKERS IN CAB | | |
| 753-021 | AM/FM ANTENNA MOUNTED ON LH FRONT A- PILLAR | 2 | |
| 748-019 | COBRA 29 WX ST FACTORY INSTALLED CB RADIO WITH WEATHERBAND | 5 | |
| 749-001 | ROOF/OVERHEAD CONSOLE CB RADIO PROVISION | | |
| 752-017 | MULTI-BAND AM/FM/WB/CB LH MIRROR MOUNTED ANTENNA SYSTEM | | |
| 810-042 | ELECTRONIC MPH SPEEDOMETER WITH SECONDARY KPH SCALE, WITH ODOMETER | | |
| 817-001 | STANDARD VEHICLE SPEED SENSOR | | |
| 812-001 | ELECTRONIC 3000 RPM TACHOMETER | | |
| 813-1B4 | VT-HU CONNECTIVITY PLATFORM HARDWARE | | |
| 8D1-002 | 2 YEARS DETROIT CONNECT BASE PACKAGE (VIRTUAL TECHNICIAN, DETROIT CONNECT PORTAL ACCESS) FOR VT-HU CONNECTIVITY PLATFORM | | |
| 162-020 | IDLE SHUTDOWN OVERRIDE, DDEC 5/6 AMBIENT AIR TEMPERATURE SENSOR | | |
| 329-022 | EIGHT EXTRA SWITCHES IN DASH | | |
| 4C1-019 | HARDWIRE SWITCH #1, ON/OFF/ON MOMENTARY, 10 AMPS IGNITION WIRED TO CUSTOMER INTERFACE CONNECTOR | | |

| Data Code | Description | Weight Front | Weight Rear |
|-----------|--|-----------------|----------------|
| 4C2-004 | HARDWIRE SWITCH #2, ON/OFF LATCHING, 20 AMPS BATTERY WIRED TO CUSTOMER INTERFACECONNECTOR | | |
| 4C3-004 | HARDWIRE SWITCH #3, ON/OFF LATCHING, 20 AMPS BATTERY WIRED TO CUSTOMER INTERFACECONNECTOR | | |
| 4C4-004 | HARDWIRE SWITCH #4, ON/OFF LATCHING, 20 AMPS BATTERY WIRED TO CUSTOMER INTERFACECONNECTOR | | |
| 4C5-004 | HARDWIRE SWITCH #5, ON/OFF LATCHING, 20 AMPS BATTERY WIRED TO CUSTOMER INTERFACECONNECTOR | | |
| 4C6-004 | HARDWIRE SWITCH #6, ON/OFF LATCHING, 20 AMPS BATTERY WIRED TO CUSTOMER INTERFACECONNECTOR | | |
| 4C7-004 | HARDWIRE SWITCH #7, ON/OFF LATCHING, 20 AMPS BATTERY WIRED TO CUSTOMER INTERFACECONNECTOR | | |
| 4C8-004 | HARDWIRE SWITCH #8, ON/OFF LATCHING, 20 AMPS BATTERY WIRED TO CUSTOMER INTERFACECONNECTOR | | |
| 482-001 | BW TRACTOR PROTECTION VALVE | | |
| 883-001 | TRAILER HAND CONTROL BRAKE VALVE | | |
| 836-015 | DIGITAL VOLTAGE DISPLAY INTEGRAL WITH DRIVER DISPLAY | | |
| 660-008 | SINGLE ELECTRIC WINDSHIELD WIPER MOTOR WITH DELAY | | |
| 304-060 | MARKER LIGHT SWITCH INTEGRAL WITH HEADLIGHT SW WITH HEADLIGHT/MRKR LT INTERRUPTER SWITCHES ON STEERING WHEEL & DASH SW FOR CUSTOMER FURNISHED SNOWPLOW LTS | | |
| 882-004 | TWO VALVE PARKING BRAKE SYSTEM WITH WARNING INDICATOR | | |
| 299-039 | SELF CANCELING TURN SIGNAL SWITCH, HEADLAMP HIGH/LOW AND FLASH, WASH/WIPE/INTERMITTENT | | |
| 298-036 | PACIFIC INSIGHT ELECTRONIC FLASHER | | |

Design

065-000 PAINT: ONE SOLID COLOR

Color

980-5E7 CAB COLOR A: L0789EY OMAHA ORANGE ELITE EY
96J-001 CAB INTERIOR PAINTED SAME AS CAB COLOR
986-020 BLACK, HIGH SOLIDS POLYURETHANE CHASSIS PAINT

| Data Code | Description | Weight Front | Weight Rear |
|-----------|---|--------------|-------------|
| 964-993 | BUMPER PAINTED SAME AS CHASSIS | | |
| 963-006 | FENDER, UNDER CAB AND INTERIOR CAB FLOOR UNDERCOATING | | |

Certification / Compliance

996-001 U.S. FMVSS CERTIFICATION, EXCEPT SALES CABS AND GLIDER KITS

Secondary Factory Options

998-001 CORPORATE PDI CENTER IN-SERVICE ONLY
 95M-998 NO CUSTOMER FURNISHED MATERIAL SPECIFIED
 999-014 DEALER HAS BEEN ADVISED OF AND ACCEPTED RESPONSIBILITY FOR MODIFICATIONS DUE TO POSSIBLE PTO/CHASSIS INTERFERENCE

Raw Performance Data

AE4-99D CALC'D FRAME LENGTH - OVERALL : 330.2
 AE8-99D CALCULATED EFFECTIVE BACK OF CAB TO REAR SUSPENSION C/L (CA) : 134.28 in
 AM6-99D CALC'D SPACE AVAILABLE FOR DECKPLATE : 137.78 in

Sales Programs

NO SALES PROGRAMS HAVE BEEN SELECTED

TOTAL VEHICLE SUMMARY

Weight Summary

| | Weight Front | Weight Rear | Total Weight |
|--------------------------|------------------|-----------------|------------------|
| Factory Weight* | 10653 lbs | 8025 lbs | 18678 lbs |
| Dealer Installed Options | 0 lbs | 0 lbs | 0 lbs |
| Total Weight* | 10653 lbs | 8025 lbs | 18678 lbs |

Dealer Installed Options

| | Weight Front | Weight Rear |
|--------------------------------|--------------|-------------|
| 2222 PARTS AND SERVICE MANUALS | 0 | 0 |

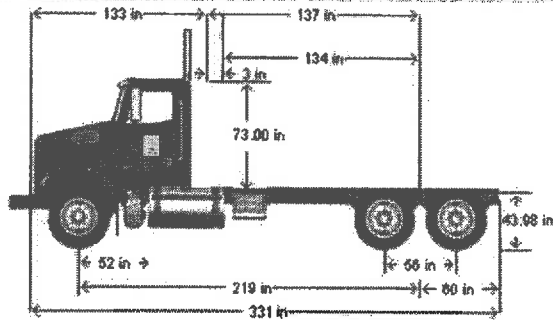
| | | |
|--------------------------------|-------|-------|
| Total Dealer Installed Options | 0 lbs | 0 lbs |
|--------------------------------|-------|-------|

(+) Weights shown are estimates only.

If weight is critical, contact Customer Application Engineering.

(***) All cost increases for major components (Engines, Transmissions, Axles, Front and Rear Tires) and government mandated requirements, tariffs, and raw material surcharges will be passed through and added to factory invoices.

D I M E N S I O N S



VEHICLE SPECIFICATIONS SUMMARY - DIMENSIONS

| | |
|-------------------------------------|---|
| Model..... | 4700SF |
| Wheelbase (545)..... | 5550MM (219 INCH) WHEELBASE |
| Rear Frame Overhang (552)..... | 1525MM (60 INCH) REAR FRAME OVERHANG |
| Fifth Wheel (578)..... | NO FIFTH WHEEL |
| Mounting Location (577)..... | NO FIFTH WHEEL LOCATION |
| Maximum Forward Position (in)..... | 0 |
| Maximum Rearward Position (in)..... | 0 |
| Amount of Slide Travel (in)..... | 0 |
| Slide Increment (in)..... | 0 |
| Desired Slide Position (in)..... | 0.0 |
| Cab Size (829)..... | 110 INCH BBC STEEL CONVENTIONAL CAB |
| Sleeper (682)..... | NO SLEEPER BOX/SLEEPER/CAB |
| Exhaust System (016)..... | RH OUTBOARD UNDER STEP MOUNTED HORIZONTAL AFTERTREATMENT SYSTEM ASSEMBLY WITH RH B-PILLAR MOUNTED VERTICAL TAILPIPE |

TABLE SUMMARY - DIMENSIONS

| Dimensions | Inches |
|--|--------|
| Bumper to Back of Cab (BBC) | 133.2 |
| Bumper to Centerline of Front Axle (BA) | 52.0 |
| Min. Cab to Body Clearance (CB) | 3.0 |
| Back of Cab to Centerline of Rear Axle(s) (CA) | 137.3 |
| Effective Back of Cab to Centerline of Rear Axle(s) (Effective CA) | 134.3 |
| Back of Cab Protrusions (Exhaust/Intake) (CP) | 2.0 |
| Back of Cab Protrusions (Side Extenders/Trim Tab) (CP) | 0.0 |
| Back of Cab Protrusions (CNG Tank) | 0.0 |
| Back of Cab Clearance (CL) | 3.0 |
| Back of Cab to End of Frame | 197.3 |
| Cab Height (CH) | 73.0 |
| Wheelbase (WB) | 218.5 |
| Frame Overhang (OH) | 60.0 |
| Overall Length (OAL) | 330.5 |
| Rear Axle Spacing | 56.0 |
| Unladen Frame Height at Centerline of Rear Axle | 44.0 |

Performance calculations are estimates only. If performance calculations are critical, please contact Customer Application Engineering.

GVWR

VEHICLE SPECIFICATIONS SUMMARY - GVWR

| | |
|---|---|
| Model..... | 4700SF |
| Cab Size (829)..... | 110 INCH BBC STEEL CONVENTIONAL CAB |
| Expected Front Axle(s) Load (lbs)..... | 20000.0 |
| Expected Pusher Axle(s) Load (lbs)..... | 0.0 |
| Expected Rear Axle(s) Load (lbs)..... | 46000.0 |
| Expected Tag Axle(s) Load (lbs)..... | 0.0 |
| Expected GVW (lbs)..... | 66000 |
| Expected GCW (lbs)..... | 0.0 |
| Front Axle (400)..... | DETROIT DA-F-20.0-5 20,000# FL1 71.0 KPI/3.74 DROP SINGLE FRONT AXLE |
| Front Suspension (620)..... | 23,000# FLAT LEAF FRONT SUSPENSION |
| Front Hubs (418)..... | CONMET PRESET PLUS PREMIUM IRON FRONT HUBS |
| Front Disc Wheels (502)..... | ACCURIDE 29374A 22.5X12.25 10-HUB PILOT 4.75 INSET 10-HAND ALUMINUM DISC FRONT WHEELS |
| Front Tires (093)..... | MICHELIN XZY-3 425/65R22.5 20 PLY RADIAL FRONT TIRES |
| Front Brakes (402)..... | MERITOR 16.5X6 Q+ CAST SPIDER CAM FRONT BRAKES, DOUBLE ANCHOR, FABRICATED SHOES |
| Steering Gear (536)..... | TRW THP-60 POWER STEERING WITH RCH45 AUXILIARY GEAR |
| Rear Axle (420)..... | RT-46-164P 46,000# R-SERIES TANDEM REAR AXLE |
| Rear Suspension (622)..... | TUFTRAC 46,000# REAR SPRING SUSPENSION |
| Rear Hubs (450)..... | CONMET PRESET PLUS PREMIUM IRON REAR HUBS |
| Rear Disc Wheels (505)..... | ALCOA LVL ONE 88565X 22.5X8.25 10-HUB PILOT HD 10-HAND ALUMINUM DISC REAR WHEELS |
| Rear Tires (094)..... | MICHELIN XDS2 11R22.5 16 PLY RADIAL REAR TIRES |
| Rear Brakes (423)..... | MERITOR 16.5X7 Q+ CAST SPIDER CAM REAR BRAKES, DOUBLE ANCHOR, FABRICATED SHOES |
| Pusher / Tag Axle (443)..... | NO PUSHER OR TAG AXLE |
| Pusher / Tag Suspension (626)..... | NO PUSHER OR TAG SUSPENSION |
| Pusher / Tag Hubs (449)..... | NO PUSHER OR TAG HUBS |
| Pusher/Tag Disc Wheels (509)..... | NO PUSHER/TAG DISC WHEELS |
| Pusher / Tag Tires (095)..... | NO PUSHER/TAG TIRES |
| Pusher / Tag Brakes (456)..... | NO PUSHER/TAG BRAKES |

TABLE SUMMARY - GVWR

| | Front | Rear 1 | Rear 2 |
|--|--------|--------|--------|
| Axle Component Weight Ratings | | | |
| Axles | 20000 | 23000 | 23000 |
| Suspension | 23000 | 23000 | 23000 |
| Hubs | 23000 | 26000 | 26000 |
| Brakes | 20000 | 23000 | 23000 |
| Wheels | 22000 | 32200 | 32200 |
| Tires | 22800 | 24020 | 24020 |
| Power Steering | 22000 | N/A | N/A |
| GAWR (per axle) | 20000 | 23000 | 23000 |
| GAWR (per axle system) | 20000 | | 46000 |
| Expected Load (per axle system) | 20000 | | 46000 |
| GVWR due to Frame | 90000 | | |
| GVWR due to Transmission | 300000 | | |
| Vehicle GVWR Summary | | | |
| Calculated GVWR | 66000 | | |
| Expected GVWR | 66000 | | |
| <i>All weights displayed in pounds</i> | | | |

Performance calculations are estimates only. If performance calculations are critical, please contact Customer Application Engineering.

SPECIFICATIONS FOR A HENDERSON ONE-WAY SNOW PLOW

GENERAL:

This specification shall describe a **One-Way Snow Plow** or approved equal. This unit shall also consist of two adjustable slotted trip assemblies, rolled moldboard and continuous seam welding. Bidders must submit with their proposal complete specifications on the unit they propose to furnish.

MINIMUM MOLDBOARD REQUIREMENTS:

Height of moldboard at nose end is 40", height of moldboard at discharge end is 63"

Cutting path 116" with a cutting edge length of 11'

10 ga Steel rolled moldboard with nine (9) 1/2"x 3-1/2" one-piece flame cut ribs. 1/4" Nose Plate **Full Welded Moldboard.** Two-position attack angle adjustment on moldboard for flexibility of use with Carbide or Standard cutting edges(45 degrees for standard cutting edges, 30 degrees for carbides cutting edges)

Moldboard height measures from the road surface to inside of radius.

Gusseted 6"x 4" x 3/4" bottom angle, 2-1/2"x 2-1/2"x3/8" top angle

Two adjustable slotted trip compression spring assemblies having 9 active coils. 5" outer dimension and 3/4" stock. Center Roller mechanism to enhance trip performance is required.

Adjustable stabilizing arm with safety shear pin having two upper mounting and eight center positions, made from 2-3/4" outer tube with 3/8" wall and 2" solid inner tube.

Two adjustable cast Mushroom shoes, moldboard wear shoe on discharge end and nose are required. Safety Chain to secure moldboard to the drive frame to limit forward movement during attack angle alterations, or in the event the telescopic brace failure.

PUSH FRAME:

95" Push Frame shall be a minimum 6"x6"x1/2" angle enclosed with 1/2" Plate (3) Slotted trip lugs are fabricated from 1-1/4" thick plate. Two 5"x5" x1/4" wall structural tube members.

Base push plate is 8"x33-1/2"x1 hr. Push frame shoe attachment legs to be 1/2' plate 10" high x10" wide gusseted providing 4 nonaligned attachment points.

**ALL WELDS ON MOLDBOARD AND PUSH FRAME TO BE CONTINUOUS WELD
SKIP WELDS NOT ACCEPTABLE.**

PAINT:

All surfaces are high-pressure cleaned and degreased with phosphate solution prior to having a Powered Coated Finish. Moldboard Orange, Pushframe Black

Meets: _____

Exceptions: _____

SPECIFICATIONS FOR A HENDERSON POWERTILT PIN WING HITCH (HWH)

GENERAL:

This specification shall describe a **POWERTILT PIN WING HITCH**. Bidders must submit with their proposal complete specifications and sales literature on the unit they propose to furnish, notating any deviations from these outlined specifications.

MINIMUM BASE HITCH REQUIREMENTS:

- Power Tilt design.
- Pin hitch with connection points for 30.5" centers
- 3-point reinforced lift arm.
- Heavy duty tubular frame construction.
- Integrated cheek plate design
- Front mount pump mount capable
- Integrated wing system base mount.
- Designed for use with a Severe Duty leveling wing and patrol wing systems.
- *Chassis frame data sheet and plow type required at time of order.

MINIMUM HITCH REQUIREMENTS:

- The main hitch frame shall consist of (2) outer vertical frame members and (3) horizontal frame members.
- The vertical uprights shall be fabricated of no less than 4" x 3" x .375w structural tube. These vertical uprights shall tie ahead of the lower horizontal bottom cross tube and upper secondary horizontal cross tube, and into the top horizontal cross tube.
- The top horizontal cross tube shall be fabricated from no less than 4" x 4" x .38w structural square tube.
- The lower horizontal bottom cross tube shall be fabricated from no less than 7" x 4" x .375w structural tube. This tube will also provide the base mounting components for the wing system mast. This tube shall be further supported to the vertical uprights by .38" gussets.
- Located on the rear side of the lower horizontal bottom cross tube shall be (4) ¼" ears flame cut to accept a 1.5" pin.
- The upper secondary horizontal cross tube shall be fabricated from no less than 7" x 4" x .375w structural tube. This tube will also provide the base mounting components for the wing system mast. This tube shall be further supported to the vertical uprights by ½" plate gussets which will also act as the lock plate for the removable pins allowing for the tilt release of the hitch.
- Located on the front side of the top horizontal cross tube shall be (4) lift arm mounting ears for mounting and supporting the plow hitch lift arm. The center (2) lift arm pivot ears shall be fabricated of no less than ½" plate. These plates shall be flame cut as to provide contact on a minimum of (3) sides of the top horizontal cross support tube. 3/8" gussets shall be utilized to further support the (2) center lift arm pivots.

Product features and specifications are based on information at the time of publication. Product design features and specifications are subject to change or correction without notice. (1/23/2015 CSM)

- The (2) lift arm outer support pivot ears shall be fabricated from no less than 1/2" plate. These supports will attach to the outer lift arm supports for reducing torsional loads on the lift arm when the front plow is in the carrying position.
- The lower front side of the hitch shall be a 6" x 4" x .75" angle which will provide the mounting surface for the lower pin hitch attachment ears, and will also provide the termination point of the outer vertical uprights. This angle shall extend beyond the vertical uprights.
- Located just above the lower front side angle shall be a 3/4" x 3" flat which will increase the bearing surface on the front side of the hitch attachment ears.
- The hitch attachment ear plates shall be fabricated from no less than 5/8" plate and have a series of (4) holes for allowing adjustment in the plow hitch mounting height. The attachment ears shall be designed as to contact the lower hitch angle on a minimum of (2) sides. Placement of the ears shall be done so to provide 30.5" centers.
- The chassis mounting side of the hitch shall consist of 5/8" thick cheek plates. The bottom leading edge of the cheek plates shall be flame cut to accept a 1.5" pin for the main hitch attachment. This pivot shall include a .75" thick x 3" diameter doubler plate for increased durability at this hinge point.
- Located on the top side of the cheek plate kit shall be a full width horizontal cross tube. The cross tube shall be fabricated with no less than 4" x 4" x .38w structural square tube.
- (2) 1/2" cylinder mount ears shall be located on the top horizontal cheek plate cross tube. These mounts shall be designed as to contact the cross tube on a minimum of 3 sides.
- The hitch lift arm shall be telescopic tube-in-tube design. The outer lift arm shall be fabricated from 4" x 4" x .38w square tube. The hitch side of the tube shall include an integral reinforcing bushing designed to accept the 1" hinge pin. Located on the bottom side of the outer lift arm tube shall be (2) 3/4" ears for pinning to the hitch lift arm cylinder. The left and right sides of the out lift arm shall include the outer lift arm supports. The main outer lift arm and lift arm supports shall pin to the main hitch lift arm attachment ears.
- The inner lift arm shall be fabricated from 3" x 3" x .38" square tube. The tube shall include a series of pin holes to allow for lift arm length adjustment. The end of the lift arm shall terminate with a 1/2" lift chain plate. The lift chain plate shall include slotted chain keepers for (2) lift chains.
- The hitch lift cylinder shall be a 4"-10", 2" double acting nitrided cylinder. Chrome plated rods will not be accepted due to their ability to flake and peel. The lift cylinder shall have a loaded U-CUP seal on the rod seal, and capped T seal on the piston seal.
- The lift cylinder shall pin to the lift arm and hitch by 1" pins with clip.
- The hitch shall be designed in a manner in which removal of the (2) locking pins will allow the lift cylinder to tilt actuate the hitch forward, allowing access to the chassis engine.

MINIMUM PAINT REQUIREMENTS:

- All steel surfaces are to be high pressure washed to remove slag, splatter, oxide and oil residue.
- The hitch system shall be powder coated black.

YES _____ NO _____

Exceptions _____

Product features and specifications are based on information at the time of publication. Product design features and specifications are subject to change or correction without notice. (1/23/2015 CSM)

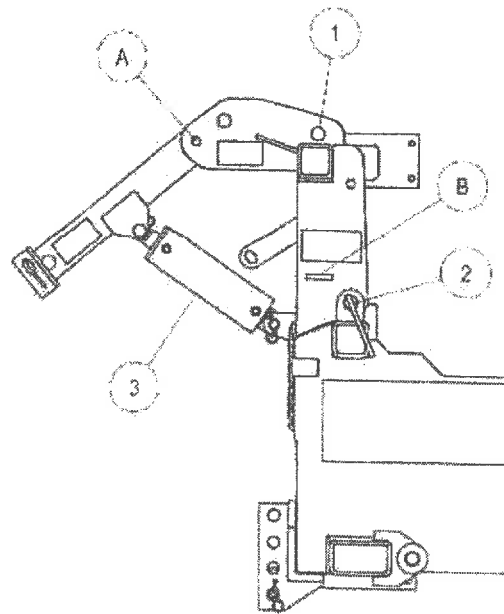


Product features and specifications are based on information at the time of publication. Product design features and specifications are subject to change or correction without notice. (1/23/2015 CSM)



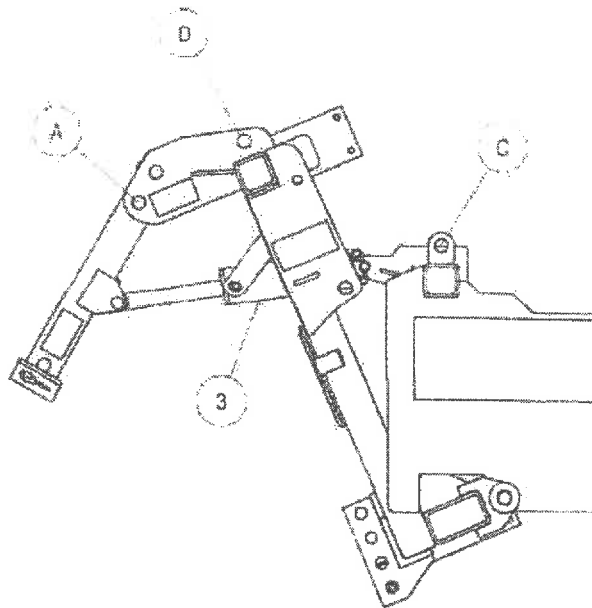
TO TILT HITCH FORWARD FOR ENGINE ACCESS:

- 1) REMOVE PIN (ITEM 1) FROM STORAGE LOCATION ON HITCH AND INSERT INTO HOLE (A).
- 2) REMOVE PINS (ITEM 2) FROM BOTH SIDES OF HITCH AND STOW IN RETAINERS (B).
- 3) SLOWLY EXTEND CYLINDER (ITEM 3) TO TILT HITCH FORWARD.



TO TILT HITCH BACK TO PLOWING POSITION:

- 1) RETRACT CYLINDER (ITEM 3) RETURNING HITCH TO UPRIGHT POSITION.
- 2) INSERT PINS (ITEM 2) INTO HOLE (C) ON BOTH SIDES OF HITCH.
3. REMOVE PIN FROM HOLE (A) AND RETURN TO STORAGE LOCATION (D).



HITCH SHOWN IN TILTED POSITION.

**SPECIFICATIONS FOR A HENDERSON
HEAVY DUTY LEVELING WING - STRAIGHT REAR MASTS**

GENERAL:

This specification shall describe a **Heavy Duty Leveling Wing**. This unit shall consist of six hydraulic cylinders for complete control of moldboards heel and toe. Break formed moldboards shall be one piece and continuous seam welded. Bidders must submit with their proposal complete specifications on the unit they propose to furnish.

YES EXCEPTIONS

FRONT WING MASTS:

Wing mast bolts to front mounted plow hitch for ease of removal

Masts are fabricated from 8" x 18.4#/ft. structural I-beam.

3 1/2" x 1 1/2" x 34" stroke double acting cylinders. Shall be reaved to provide not less than 68" of front slide travel. Cylinders shall have a nitrided cylinder tube.

Benching capability is 68"

REAR WING MASTS:

Rear masts shall consist of a minimum 12" I beams x 22 lb/ft and 12" structural channel x 25.0 lb/ft, joined together on two sides by 1/4" steel plate.

Total post box section shall be 52 lb/ft and an R.B.M. of not less than 1,690,000 inch pounds.

The rear masts shall be adjustable in height and readily removable without disturbing the hydraulic reservoir, valves, and controls.

Rear mast attachment shall be a boxed rectangular weldment of structural channel and 7 gauge sheet steel, which includes a cross member at the top of the chassis frame rails from not less than a 10" structural channel x 15.3 lb/ft.

A removable panel for inspection and service of the rear control cylinder shall be included in the rear beam.

Rear wing cylinders shall be not less than a 3 1/2" x 1 1/2" x 34" stroke double acting type located within the boxed rectangular weldment at the removable rear beams. Cylinders shall have a nitrided cylinder tube.

Brace control cylinders shall be not less than 3 1/2" x 1 1/2" x 43" stroke double acting type, located outside of the rear support beam. Cylinders shall have a nitrided cylinder tube.

The rear of the leveling wings shall be supported by two (2) extra heavy duty telescopic wing braces (non-tripping). Shafts shall be 2 3/8" diameter rounds and tubing shall be not less than 3" in outside diameter, with 1/4" wall thickness bottom brace to have compression spring.

RESERVOIR:

Reservoir shall be not less than 40 gallons and mounted on rear wing post support behind chassis cab.

Reservoir shall be made from 7 gauge steel and equipped with a filling strainer, baffle plate, breather vent, and an oil level/temperature sight gauge.

PAINT:

All metal surfaces are to be cleaned to remove slag, splatter, oxide, and oil residue.

All surfaces are high-pressure cleaned and degreased with phosphate solution before being primed and finish painted.

All surfaces are high-pressure cleaned and degreased with phosphate solution prior to painting. Moldboard is primed with a high-quality catalyzed primer and then finished with Highway Orange enamel paint. Mast assembly and mounting components are powder coat painted black.

**SPECIFICATIONS FOR A HENDERSON
HEAVY DUTY LEVELING WING**

GENERAL:

This specification shall describe a **Heavy Duty Leveling Wing**. Break formed moldboard shall be one piece and continuous seam welded. Bidders must submit with their proposal complete specifications on the unit they propose to furnish.

MINIMUM MOLDBOARD REQUIREMENTS:

| | YES | EXCEPTIONS |
|---|------------|-------------------|
| Moldboard height shall be 29" at intake / 39" discharge | _____ | _____ |
| Moldboard cutting edge length shall be 11', overall moldboard length is one foot longer | _____ | _____ |
| 11' x 1/2" x 8" C1090 one piece AASHO center punched cutting edge | _____ | _____ |
| Cutting edge is bolted to a minimum 5" x 3-1/2" x 3/4" structural angle. | _____ | _____ |
| 7 gauge break formed moldboard with eight (8) flame cut ribs for extra strength and rigidity. Six (6) ribs are of 3/8" steel, the two drive ribs are 1/2" steel. | _____ | _____ |
| Continuous welded one-piece moldboard | _____ | _____ |
| Top angle is a 2 1/2" x 2 1/2" x 3/8" structural angle. Wing moldboard is further reinforced by two (2) intermediate full length horizontal braces of 3 1/2" x 3 1/2" x 1/2" structural angles. | _____ | _____ |
| <u>PAIN:</u> | | |
| All metal surfaces are to be cleaned to remove slag, splatter, oxide, and oil residue. | _____ | _____ |
| All surfaces are high-pressure cleaned and degreased with phosphate solution prior to painting. Moldboard is then finished with Highway Orange Powdered Coated paint. | _____ | _____ |

**SPECIFICATIONS FOR A HENDERSON REAR DISCHARGE
AR 400 STEEL MULTI-PURPOSE ALL SEASON BODY**

GENERAL

This specification shall describe a **FLAT FLOOR REAR DISCHARGE** combination dump/spreader body or equal. Bidders must submit with their bid complete specifications on the unit they propose to furnish.

| 1. | MINIMUM BODY REQUIREMENTS | COMPLIANCE |
|-----------|--|--|
| 1.01 | Capacity to be 13.5 cubic yards struck without sideboards/ 17.2 cubicyards with sideboards | <input type="checkbox"/> Yes <input type="checkbox"/> No |
| 1.02 | Inside length 14' | <input type="checkbox"/> Yes <input type="checkbox"/> No |
| 1.03 | The inside of the body shall be 86" wide to maximize capacity and lower the center of gravity of the unit. | <input type="checkbox"/> Yes <input type="checkbox"/> No |
| 1.04 | Side height of 44 inches. Tailgate height of 56" on 44" sides. Headsheet height of 60 inches with internal doghouse. | <input type="checkbox"/> Yes <input type="checkbox"/> No |
| 2. | SIDES & HEADSHEET | <input type="checkbox"/> Yes <input type="checkbox"/> No |
| 2.01 | One piece sides constructed of AR 400 steel, 200,000 PSI tensile strength. Boxed formed top rails constructed of 10ga steel and be of dirt shedding design. | <input type="checkbox"/> Yes <input type="checkbox"/> No |
| 2.02 | Sides to be reinforced with (1) horizontal fully welded side brace constructed of 10ga steel. Horizontal bracing to be of dirt shedding design. | <input type="checkbox"/> Yes <input type="checkbox"/> No |
| 2.03 | Lower rubrail to be constructed of 10g steel and be of dirt shedding design. | <input type="checkbox"/> Yes <input type="checkbox"/> No |
| 2.04 | Headsheet and one-piece sides to be 3/16 AR 400 steel, 200,000 PSI tensile strength. NO EXCEPTIONS | <input type="checkbox"/> Yes <input type="checkbox"/> No |
| 2.05 | Headsheet shall be vertical. Headsheets which are sloped to accommodate the hoist are NOT ACCEPTABLE . | <input type="checkbox"/> Yes <input type="checkbox"/> No |
| 2.06 | 2" wide side board pockets set for 10" Boards center board tab | <input type="checkbox"/> Yes <input type="checkbox"/> No |
| 2.07 | 17" x 5" x 1/4" 201SS rear corner posts are tied into a 1/4" formed channel on the front and rear lower side of bolster.. | <input type="checkbox"/> Yes <input type="checkbox"/> No |
| 3. | CONVEYOR/FLOOR | |
| 3.01 | Floor Constructed of 1/4" AR400 with 5" round floor to side radius. | <input type="checkbox"/> Yes <input type="checkbox"/> No |
| 3.02 | 12.5" truck frame to body floor height for lower center of gravity and lower mounting height. | <input type="checkbox"/> Yes <input type="checkbox"/> No |
| 3.03 | 1/2" SS formed inner sill which also forms the conveyor chain guard. 7 gauge SS formed outer longsills. | <input type="checkbox"/> Yes <input type="checkbox"/> No |
| 3.04 | 1/4" AR400, (190,000 PSI yield , 200,000 PSI tensile strength, Brinnell Hardness of 400), conveyor bed floor. | <input type="checkbox"/> Yes <input type="checkbox"/> No |
| 3.05 | Formed 3/8" thick tie plate to fully extend between the left and right side of the body, located at the rear of the unit. This tie plate will provide additional structural support at the rear of the body to prevent sagging at the rear corner posts. | <input type="checkbox"/> Yes <input type="checkbox"/> No |
| 3.06 | 2" diameter drive and idler shafts with 8 tooth sprockets. Drive sprockets are double keyed with 1/2" keys to shaft. Sprockets shall be heat treated to 50 Rockwell C hardness. | <input type="checkbox"/> Yes <input type="checkbox"/> No |
| 3.07 | Conveyor driven by a 25:1 planetary gearcase and piston motor driving rear shaft. | <input type="checkbox"/> Yes <input type="checkbox"/> No |
| 3.08 | 28" wide conveyor. | <input type="checkbox"/> Yes <input type="checkbox"/> No |
| 3.09 | D667K pintle chain (24,500 lb. tensile/strand). | <input type="checkbox"/> Yes <input type="checkbox"/> No |
| 3.10 | 1/2" X 1-1/2" conveyor crossbars spaced on every link. | <input type="checkbox"/> Yes <input type="checkbox"/> No |
| 3.11 | The rear apron shall have a bolt on cover plate which allows for easy | |

Product features are based on published information at the time of publication. Product features are subject to change without notice. (10/28/2010csm)

| | | |
|-----------|--|--|
| | access to gearcase. | |
| 4. | SPINNER CHUTE ASSEMBLY: | |
| 4.01 | Spinner assembly must be adjustable left to right, front to back, and up and down to assure accurate placement of material on spinner disc to facilitate control of spread pattern. | <input type="checkbox"/> Yes <input type="checkbox"/> No |
| 4.02 | Rear spinner baffle is fixed for protection of chassis undercarriage | <input type="checkbox"/> Yes <input type="checkbox"/> No |
| 4.03 | 20" diameter poly spinner disc | <input type="checkbox"/> Yes <input type="checkbox"/> No |
| 4.04 | SS Quick Connects | <input type="checkbox"/> Yes <input type="checkbox"/> No |
| 4.05 | Spinner hydraulic motor shall mount directly on top of spinner disc. Motor shall be enclosed in a removeable material shedding protective cover. Bottom mount motor or drive shaft with bearings not acceptable. | <input type="checkbox"/> Yes <input type="checkbox"/> No |
| 5. | TAILGATE: | |
| 5.01 | 3/16 AR 400 tailgate sheet, 200,000 PSI tensile | <input type="checkbox"/> Yes <input type="checkbox"/> No |
| 5.02 | Full perimeter boxing with all horizontal edges sloped outward. | <input type="checkbox"/> Yes <input type="checkbox"/> No |
| 5.03 | Tailgate must be double acting (NO EXCEPTIONS) | <input type="checkbox"/> Yes <input type="checkbox"/> No |
| 5.04 | Tailgate shall be seven panel design with (2) vertical braces and (2) horizontal braces. | <input type="checkbox"/> Yes <input type="checkbox"/> No |
| 5.05 | Flush mount, 1/2" flame cut tailgate pivots | <input type="checkbox"/> Yes <input type="checkbox"/> No |
| 5.06 | Heavy duty offset hinge plates, 1" flame cut | <input type="checkbox"/> Yes <input type="checkbox"/> No |
| 5.07 | 3/4" latch hooks with 3/8" latch plates | <input type="checkbox"/> Yes <input type="checkbox"/> No |
| 5.08 | 1-1/4" hot rolled upper and lower pins | <input type="checkbox"/> Yes <input type="checkbox"/> No |
| 5.09 | 7 gauge 9" x 24" rear feedgate | <input type="checkbox"/> Yes <input type="checkbox"/> No |
| 5.10 | The tailgate shall have Rear Feed Gate | <input type="checkbox"/> Yes <input type="checkbox"/> No |
| 5.11 | Single brake chamber air tailgate latches with overcenter linkage. Pivot shafts include stainless steel bushings to eliminate seizing | <input type="checkbox"/> Yes <input type="checkbox"/> No |
| 6. | HOIST: | |
| 6.01 | Front mounted telescopic hoist with small internal doghouse (maximum 12" deep). | <input type="checkbox"/> Yes <input type="checkbox"/> No |
| 6.02 | Single cylinder, trunnion mount (inverted cylinder not acceptable). | <input type="checkbox"/> Yes <input type="checkbox"/> No |
| 6.03 | N.T.E.A. class 30. | <input type="checkbox"/> Yes <input type="checkbox"/> No |
| 6.04 | SA stage cylinder with 5" first stage diameter Wear and corrosion resistant nitrided cylinder tubes. | <input type="checkbox"/> Yes <input type="checkbox"/> No |
| 6.05 | Minimum two-year cylinder warranty | <input type="checkbox"/> Yes <input type="checkbox"/> No |
| 6.06 | Connecting pivots to have replaceable greaseless composite bushings. | <input type="checkbox"/> Yes <input type="checkbox"/> No |
| 6.07 | 5 degree oscillating cylinder collar | <input type="checkbox"/> Yes <input type="checkbox"/> No |
| 7. | REAR HINGE ASSEMBLY: | |
| 7.01 | 6" x 8" x 1/2" structural angle | <input type="checkbox"/> Yes <input type="checkbox"/> No |
| 7.02 | 2" Stainless Steel hinge pins connecting to 2-1/2" hinge blocks using replaceable greaseless composite bushings for a minimal pin-to-bushing clearance. | <input type="checkbox"/> Yes <input type="checkbox"/> No |
| 8. | LIGHT PACKAGE: | |
| 8.01 | Rubber mounted, shock resistant stop/turn/tail light in each rear corner post. Highly visible, yet recessed for protection, led Amber Flashing light and led Reverse light. Four red rear, two side mounted red rear reflectors, and two side mounted amber front reflectors. Includes a one piece sealed wiring harness | <input type="checkbox"/> Yes <input type="checkbox"/> No |

Product features are based on published information at the time of publication. Product features are subject to change without notice. (10/28/2010csm)

| | | |
|------------|---|--|
| 8.02 | Rubber mounted, shock resistant I.C.C. 3-light cluster, for mounting in a supplied fabricated light bar | <input type="checkbox"/> Yes <input type="checkbox"/> No |
| 9. | PAINT PREPARATION: | |
| 9.01 | All surfaces are high pressure cleaned & phosphated | <input type="checkbox"/> Yes <input type="checkbox"/> No |
| 9.02 | Natural | <input type="checkbox"/> Yes <input type="checkbox"/> No |
| 10. | ADDITIONAL EQUIPMENT: | |
| 10.01 | Conveyor cover in 3/16" AR400 steel | <input type="checkbox"/> Yes <input type="checkbox"/> No |
| 10.02 | SS Underbody Pan | <input type="checkbox"/> Yes <input type="checkbox"/> No |
| 10.03 | Cabshield 22"x90" Intergral Cabshield with 4 light holes 2 forward 2 sideways (4) LED Amber Flashing Lights lights to be boxed in, 12" ss Grab Handle Driver Side | <input type="checkbox"/> Yes <input type="checkbox"/> No |
| 10.04 | Pull Out Ladder with 2 Grip struts steps with 2 SS Horizontal Mount 44" Grab Handles, 2 interior steps welded driver side front corner | <input type="checkbox"/> Yes <input type="checkbox"/> No |
| 10.05 | 2 hooks for chains | <input type="checkbox"/> Yes <input type="checkbox"/> No |
| 10.06 | SS Spring Loaded Shovel Holder | <input type="checkbox"/> Yes <input type="checkbox"/> No |
| 10.07 | Electric Tarp system with Dual Alluminum Arms Asphalt Rated Tarp 30 Degree elbows | <input type="checkbox"/> Yes <input type="checkbox"/> No |
| 10.08 | 2 Mud Flaps before tires on Antisway SS Bracket | <input type="checkbox"/> Yes <input type="checkbox"/> No |
| 10.09 | 2 Mud Flaps behind tirea on SS quick removable bracket | <input type="checkbox"/> Yes <input type="checkbox"/> No |
| 10.10 | Pin on Asphalt Lip, | <input type="checkbox"/> Yes <input type="checkbox"/> No |
| 10.11 | Screens opening set for sand | <input type="checkbox"/> Yes <input type="checkbox"/> No |
| 10.12 | Pintle Plate 3/4" thick, Glad Hands, D Rings, Electrical Connections 25 ton swivel Pintle Hook, and Chipper Bar Lights to be recessed | Yes No |
| 10.13 | Vibco Vibrator with mounting plate | Yes No |
| 10.14 | 3 work lights 1 Rear of Wing and 2 Rear of Body all led | <input type="checkbox"/> Yes <input type="checkbox"/> No |
| 10.15 | Body Up Swith, Power Smart Distribution Panel | Yes No |
| 10.16 | 18"X18"X24" Highly Polished Tool Box with SS Mounting Brackets | Yes No |
| 10.17 | Body to be painted Black | Yes No |
| | | |
| | | |
| | | |

Product features are based on published information at the time of publication. Product features are subject to change without notice. (10/28/2010csm)

Hydraulics & Plumbing;

Pump:

YES EXCEPTIONS

Power for hydraulics will come from a front engine mounted tandem pump with Electric Clutch (Commercial or approved equal) Plumbed to supply the plow and body functions.

Hoses:

All suction & return shall meet or exceed a rating of SAE 100R4. Pressure lines shall meet or exceed a rating of SAE100R2. All hoses shall be routed in such a way as not to interfere with or come in contact with exhaust, drive shaft or any potential hazards All lines routed under or in the chassis frame will be with held coated steel supports, plastic ties will not be accepted. All hoses shall use "JIC" fittings "NO EXCEPTIONS". All hydraulic lines front and rear of chassis to be SS tubing leaving customer with short hoses as required. SS Quick Connect for Plow, Wing, and Spinner

Controls:

All valve control actuation shall be accomplished via proportionately balance pneumatic over hydraulic air controllers and cylinders. Control levers shall be booted, and shall include chrome stick fitted with palm size ends. Included shall be a secondary filter, regulator and lubricator. The plow controls shall be located on a pedestal mounted pivoting console, which adjust to accommodate either the driver or wingman operation. The dump body control shall be air-operated on a separate pedestal near the driver.

Salter controls:

There shall be a Freedom II Controller, control valve located between the seats in the cab conveniently in reach for the operator. There shall be hydraulic lines run the end of the body for operating the salter ending in SS quick disconnects.

Valve Bank:

Valve assembly shall be a fully proportional "stack type" and have a minimum capacity of 35 gpm at 2500psi. The valve shall be mounted in the rear wing mast. Five sections shall be provided for the operation of the plow equipment & dump body.

There shall be an in tank return line filter, sight / temp gauge & a low oil light mounted in the cab.