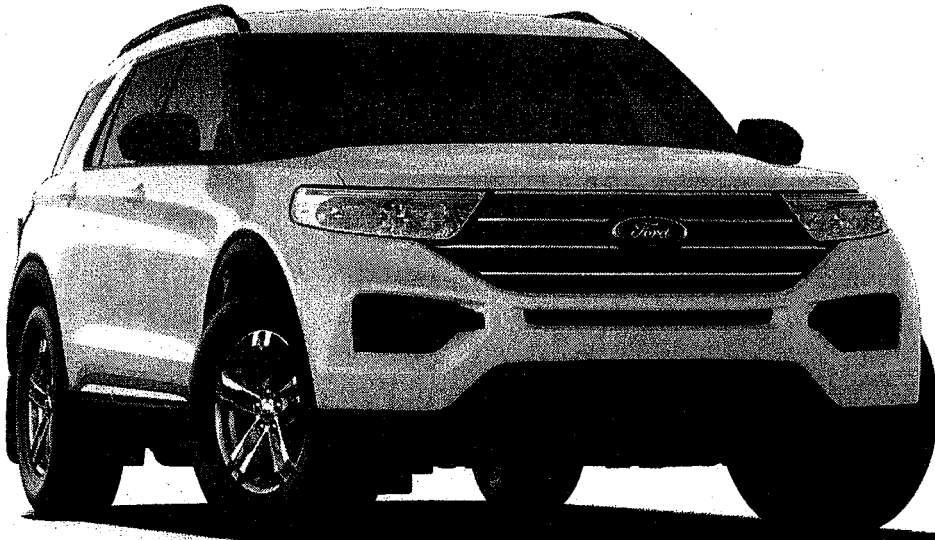




2021 Explorer

XLT

Have vehicle
questions?



Model

- \$38,675 2021 Ford Explorer XLT AWD, 2.3L EcoBoost I-4 Engine with Auto Start-Stop Technology, 10-Speed Automatic Transmission with SelectShift Capability - 10R60

Paint^{S4}

- \$0 Oxford White

Powertrain^{S4}

- 2.3L EcoBoost® I-4 Engine with Auto Start-Stop Technology
- Intelligent 4 Wheel Drive

Packages^{S4}

- \$0 200A

Exterior^{S4}

- \$0 18" Five-Spoke Sparkle Silver-Painted Aluminum Wheels
- \$205 Splash Guards
- \$0 Pre-Collision Assist with Automatic Emergency Braking (AEB)
- \$0 BLIS® (Blind Spot Information System) with Cross-Traffic Alert
- \$0 Rear View Camera with Backup Assist Grid Lines and Washer
- \$0 P255/65 R18 111H Tires

Interior^{S4}

- \$0 Sandstone
- \$0 Unique Cloth Front Bucket Seats
- \$0 Second Row Captains with E-Z Entry and Step-Over Center Console

<https://shop.ford.com/build/explorer/?gnav=vhpnav>

5/20/2020

Ford Explorer - Build & Price

Page 4 of 8

- \$0 Third Row - 50/50 Split-Fold-Flat (Manual)
- \$100 Cargo Mat
- \$120 Front and Second Rows Floor Liners
- \$0 AM/FM Stereo,MP3 Capable with Six (6) Speakers
- \$0 SYNC® 3

- Second-row captain seats with Power-Assist Fold
- Cloth seating surfaces
- Second-row captain seats
- Pass-through second-row console
- Third-row 50/50 split-fold bench seat, manual
- Unique cloth seating surfaces

Exterior Features


- Headlamps – Autolamp On/Off, LED Low and High Beams with Courtesy Delay
- XLT body color door handles
- Body-color liftgate spoiler
- Black mesh insert with chrome bars
- Headlamps – Autolamp Auto On/Off, LED Low Beams, Halogen Reflector High Beams
- LED Signature Lighting
- LED taillamps
- Liftgate Appliqué - chrome
- Mirrors, Sideview – Power Glass, Manual-Folding and Black Molded-in-Color Caps
- Power Liftgate
- Rear Bumper Step pad -- Molded-In-Color with Black
- Roof rack side rails, black with black end caps
- Chrome bodyside cladding accent
- Acoustic-laminate windows glass front row side
- Privacy Glass, Second, Third row and liftgate

Safety

- AdvanceTrac® with Roll Stability Control™
- Belt-Minder®
- Front Passenger and Driver Knee Airbag
- LATCH (Lower Anchors and Tether Anchors for Children)
- Safety Canopy® System
- SOS Post-Crash Alert System™
- Traction control
- Battery-saver feature
- Individual Tire Pressure Monitoring System (ITPMS)
- Perimeter alarm
- Remote keyless/illuminated entry
- SecuriCode™ Keyless Entry Keypad
- SecuriLock® Passive Anti-Theft System

Packages

- Ford Co-Pilot360™

Your Configuration:  Ford Explorer XLT AWD, 2.3L EcoBoost I-4 Engine with Auto Start-Stop Technology, 10-Speed Automatic Transmission with SelectShift Capability - 10R60

Pricing shown for Zip code 13850 as of May 20, 2020 ^{S2}

Note. Information is provided on an "as is" basis and could include technical, typographical or other errors. Ford makes no warranties, representations, or guarantees of any kind, express or implied, including but not limited to, accuracy, currency, or completeness, the operation of the Site, the information, materials, content, availability, and products. Ford reserves the right to change product specifications, pricing and equipment at any time without incurring obligations. Your Ford dealer is the best source of the most up-to-date information on Ford vehicles. Disclosures through S18 apply to Search Dealer Inventory, Request A Quote, Get An Internet Price, Get A Quote, Let Us Find It For You, Build & Price and Incentives & Offers.